



# Mammal Tracks



## Harvest Mouse



- 4 toes front foot
- 5 toes hind foot
- Front foot, 0.8 x 0.8cm
- Longer hind foot, 1.3 x 1cm
- Rarely found

## Hedgehog



(C) Gillie Muir & Pat Morris

- 5 short toes on each foot
- Front foot 4cm x 2.5cm
- Back foot longer, 4.5cm x 2.5cm
- Long, sharp claws

## Rabbit



- 5 toes but only 4 show on print
- Short claws
- Smaller front feet, 3.5 x 2.5cm
- Longer back feet, 6 x 2.5cm
- Oval pads, covered in fur

## Badger



(C) James Homer

- 5 toes on each foot
- Central, kidney-shaped pad
- Long claws
- Front foot 6 x 5.5cm
- Back foot 6 x 5cm

## Red Deer



- 2 hooves on each foot
- Long and narrow
- Symmetrical
- 7.8 x 6cm
- Splayed outwards, if running



Track drawings and photos are not to scale!

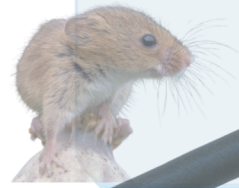




# Mammal Tracks



## Harvest Mouse



- 4 toes front foot
- 5 toes hind foot
- Front foot, 0.8 x 0.8cm
- Longer hind foot, 1.3 x 1cm

## Hedgehog



(C) Gillie Muir & Pat Morris

- 5 short toes on each foot
- Front foot 4cm x 2.5cm
- Back foot longer, 4.5cm x 2.5cm
- Long, sharp claws

## Rabbit



- 5 toes but only 4 show on print
- Short claws
- Smaller front feet, 3.5 x 2.5cm
- Longer back feet, 6 x 2.5cm
- Oval pads, covered in fur

## Badger



(C) James Homer

- 5 toes on each foot
- Central, kidney-shaped pad
- Long claws
- Front foot 6 x 5.5cm
- Back foot 6 x 5cm

## Red Deer



- 2 hooves on each foot
- Long and narrow
- Symmetrical
- 7.8 x 6cm
- Splayed outwards, if running



Track drawings and photos are not to scale!