



# Mammal Poo

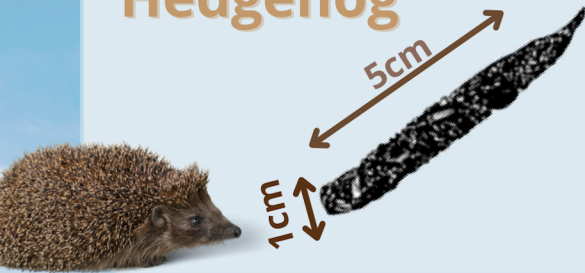


## Harvest Mouse



- Tiny, thin, black droppings
- No smell
- Small heaps, only found in the nests

## Hedgehog



(C) Cetra Coverdale Pearson

- Blue-black
- Rounded at the ends
- Sweet smell, maybe like ammonia
- May contain shiny insect legs and wing cases
- Dropped at random

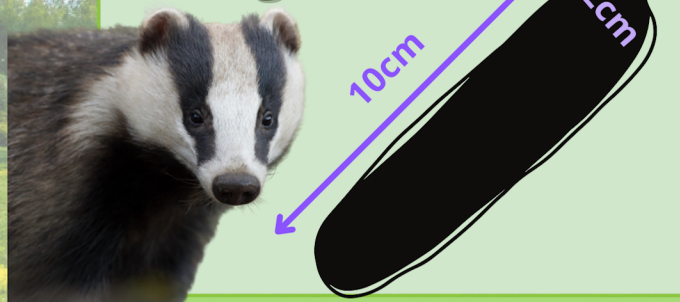
## Rabbit



(C) Susanna Ramsey

- Black/green colour turning light brown
- Sweet smell, like digestive biscuits
- Often left in large numbers on open ground, on ant hills or molehills

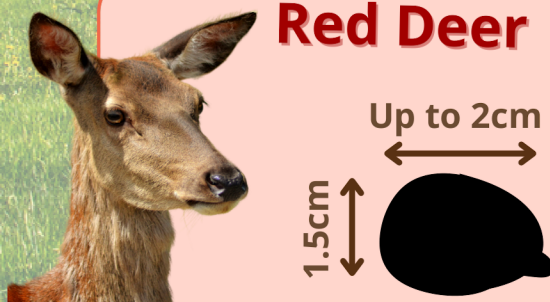
## Badger



(C) Dave Williams

- Blue/black colour
- Foul, strong, musky smell
- Contains seeds, berries and fruit stones, often beetle body parts
- Usually in a small pit

## Red Deer



- Black, drying to brown
- Sticky 'currants'
- No smell
- Dropped in piles
- Males leave 'pats' 5-7cm diameter, in summer

**Not to scale!**

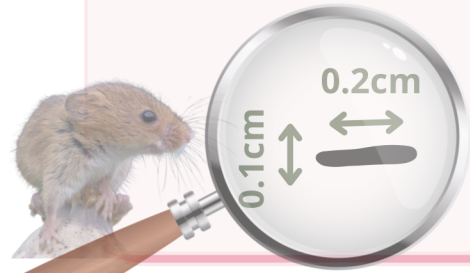




# Mammal Poo

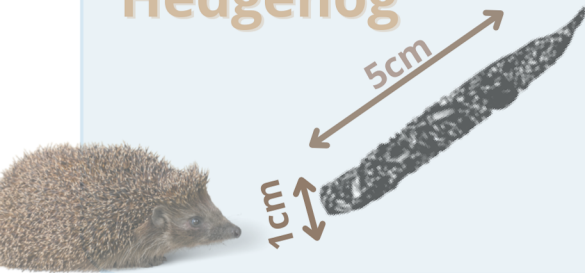


## Harvest Mouse



- Tiny, thin, black droppings
- No smell
- Small heaps, only found in the nests

## Hedgehog



(C) Cetra Coverdale Pearson

- Blue-black
- Rounded at the ends
- Sweet smell, maybe like ammonia
- May contain shiny insect legs and wing cases
- Dropped at random

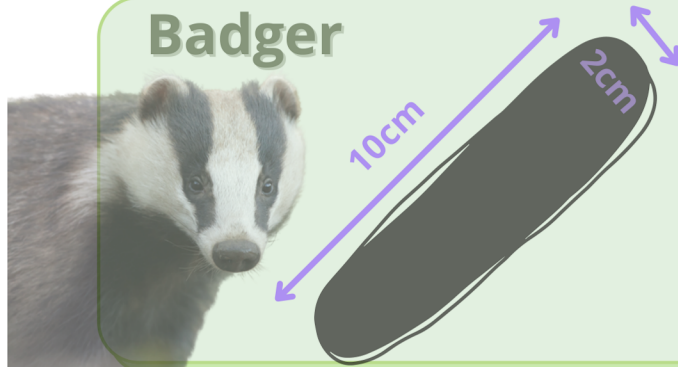
## Rabbit



(C) Susanna Ramsey

- Black/green colour turning light brown
- Sweet smell, like digestive biscuits
- Often left in large numbers on open ground, on ant hills or molehills

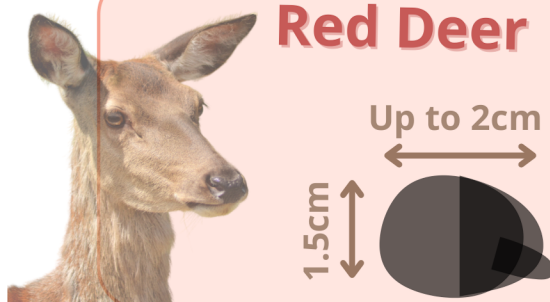
## Badger



(C) Dave Williams

- Blue/black colour
- Foul, strong, musky smell
- Contains seeds, berries and fruit stones, often beetle body parts
- Usually in a small pit

## Red Deer



- Black, drying to brown
- Sticky 'currants'
- No smell
- Dropped in piles
- Males leave 'pats' 5-7cm diameter, in summer

**Not to scale!**